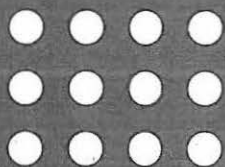


# SUB12



**THE SUBSTATION**

CENTRE FOR ART & CULTURE

**26 JULY—19 AUG**  
**REBECCA AGNEW**  
**JUAN FORD**  
**STEVEN RENDALL**  
**SANNE MESTROM**

Presenting Partner



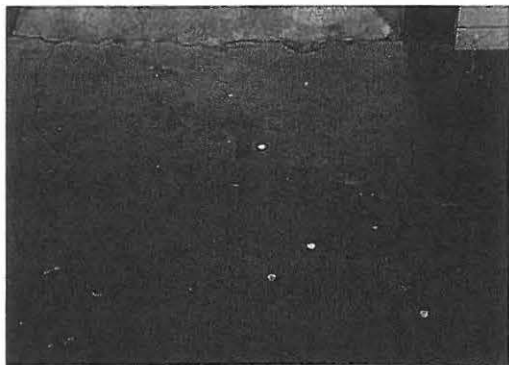
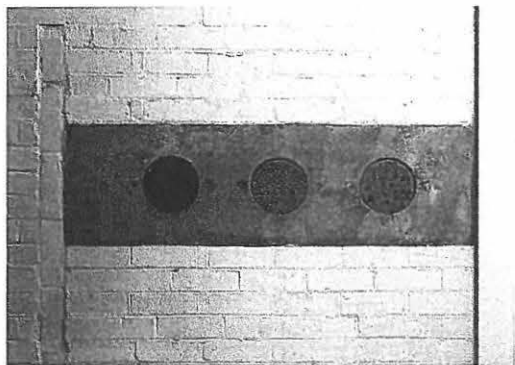
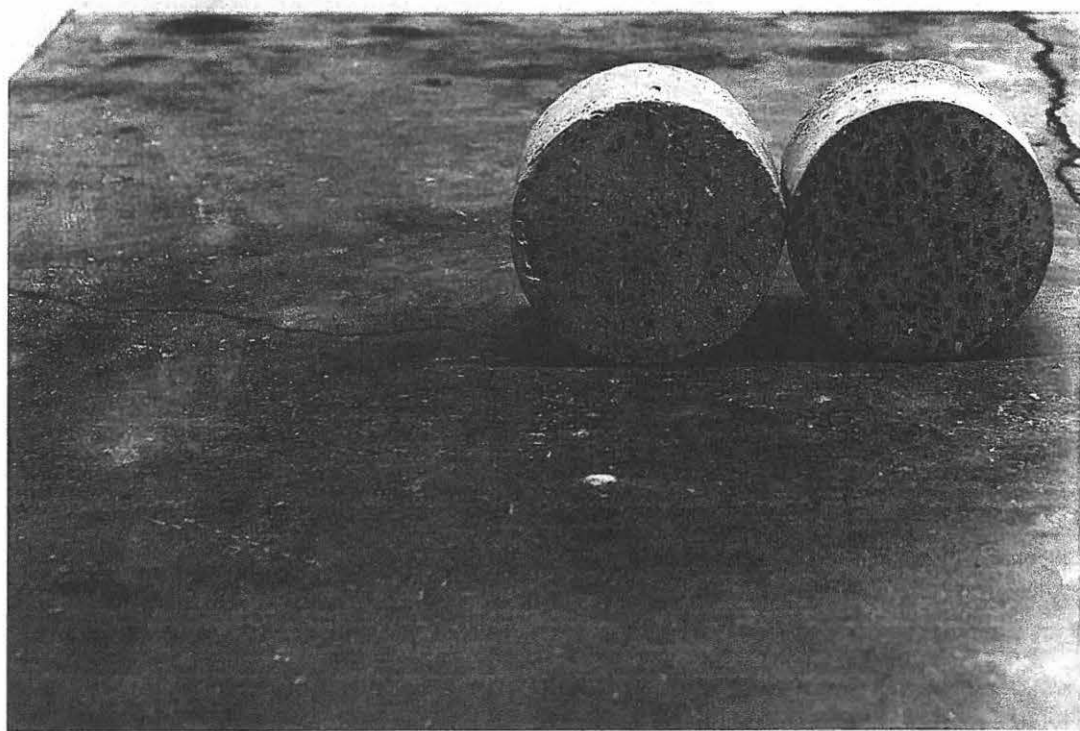
**Hobsons Bay**  
CITY COUNCIL

## **CURATOR'S FOREWORD**

**SUB12 is a major annual three-month exhibition program presenting newly commissioned work by twelve leading contemporary Australian artists presented in partnership with Hobson's Bay City Council.**

Under brief 'Twelve Artists, Twelve Weeks, Twelve Ambitious New Works' I approached SUB12 as an evolutionary show that tracks current interesting movements in contemporary art practice. Over three months we experience the work of twelve leading contemporary artists in three exhibitions. This second exhibition in the series features major works from artists Rebecca Agnew, Juan Ford, Sanne Mestrom and Steven Rendall. Each artist has created new challenging works for The Substation site with an incredibly diverse range of responses.

**Jessica Bridgfoot**





## SANNE MESTROM

**CURRENTLY LIVES AND WORKS IN  
GIPPSLAND, VICTORIA**

Mestrom and has a PhD in Fine art from RMIT (2008). Born in the Netherlands in 1979, Mestrom moved to New Zealand in 1983 and currently lives and works in Victoria. Mestrom works across mediums of sculpture and installation and recently completed a postgraduate certificate in Public Art at RMIT (2009) Mestrom was a Gertrude Contemporary studio artist (2009/11) and her work has been curated into many important exhibitions on sculpture including *Pretty Air and Useful Things*, curated by Rosemary Forde, MUMA, Melbourne (2012); *Social Sculpture*, curated by Charlotte Day, Anna Schwartz Gallery, Sydney (2011); *Shaker Peg*, Chalk Horse, Sydney (2010), *Things I wish I'd known*, Westspace (2010) A history of space is the history of wars, Enjoy Public Art Gallery, New Zealand. Mestrom has been awarded numerous grants and awards and in 2010 was an artist in residence at SOMA, Mexico City.

Installation images: *New Fillings* 2012, cast concrete, hand cast bronze inserted into concrete floor cavities. Courtesy Chalk Horse Gallery, Sydney and Utopian Slumps, Melbourne

**SUB12 Proudly Supported by**

---



**Hobsons Bay**  
CITY COUNCIL

**ARTS  
VICTORIA**



Exhibition installation  
photography by Andrew Curtis

**The Substation Proudly Supported by**

---



**Hobsons Bay**  
CITY COUNCIL



**Besen Family**  
FOUNDATION

**President**

Lynne Kosky

**Director**

Jeremy Gaden

**Curator**

Jessica Bridgfoot

**SUB12  
Installation team**

Ash Buchanan  
Jordan Marani  
Lachlan Petras

**Gallery  
Volunteers**

Alice Clanachan  
Kate Downey  
Carmel Kozlup  
Natasha Mian  
Sophie Perillo  
Donna Sadler

**Visual Arts  
Committee**

Kate Daw  
Max Delany  
Tully Moore

**28 JUNE—22 JULY**

SANTINA AMATO  
TREVELYAN CLAY  
RY HASKINGS  
MARK TITMARSH

**#2/3**

limited  
edition  
catalogue

**26 JULY—19 AUG**

REBECCA AGNEW  
JUAN FORD  
STEVEN RENDALL  
SANNE MESTROM

**23 AUG—16 SEPT**

STEVEN ASQUITH  
SANJA PAHOKI  
SIMON PERICICH  
MASATO TAKASAKA



**THE SUBSTATION**

CENTRE FOR ART & CULTURE

1 Market Street, Newport VIC 3015  
Tel: (03) 9391 1110  
[www.thesubstation.org.au](http://www.thesubstation.org.au)